
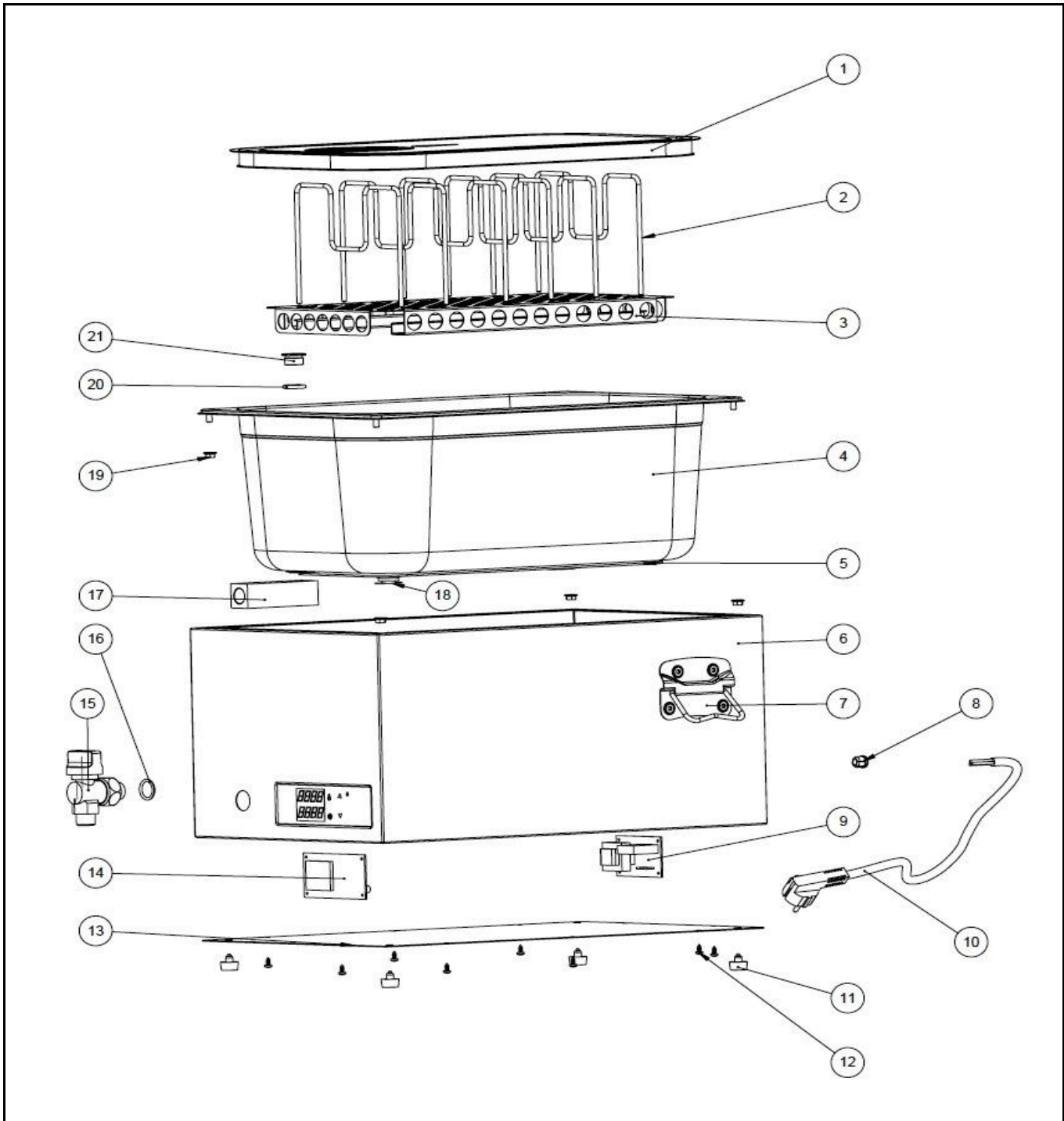



Drawing

 HENDI FOOD SERVICE EQUIPMENT Hendi B.V. Steenoven 21 3911 TX Rhenen The Netherlands	Batch #	Appliance part#
	Batch nr 403053 and up	225448
	Description	
	Sous-vide system	

Date	14-10-2015	Revision #	1.1
Revision	New model.		



Bill of materials (BOM)

 HENDI <small>FOOD SERVICE EQUIPMENT</small> Hendi B.V. Steenoven 21 3911 TX Rhenen The Netherlands	Batch #	Appliance part#
	Batch nr 403053 and up	225448
	Description	
Sous-vide system		


Date	14-10-2015	Revision #	1.1
Revision	New model.		

Item	Description	Part#	Quantity	Remark	Picture
1	Lid GN 1/1 with silicone rim	931035	1		
2	Bow grid	931059	6		
3	Bottom grid plate GN1/1	931011	1	Incl. 6 pcs bow grid 931059	
4	Bin GN1/1	n/a	1		
5	Element 600W	n/a	1		
6	Frame	n/a	1		
7	Handle	935378	2		
8	Pull relief	931066	1		
9	Main pcb	nss	1	Available as 935347	
10	Power cord	205303	1		
11	Feet	935354	4		
12	Sheet metal screw	n/a	8		
13	Bottom cover	n/a	1		
14	Display pcb	935347	1	Incl. item 9	
15	Faucet	251515	1		
16	O-ring	931042	1		
17	Drainage pipe	933640	1		
18	Clixon 150°C	930496	2		
19	Flange nut M6	n/a	4		
20	Sealing drainage	935361	1		
21	Drainage	935385	1		

n/a -> not available

nss -> not sold separately

Wiring diagram

 <p>Hendi B.V. Steenoven 21 3911 TX Rhenen The Netherlands</p>	Batch #	Appliance part#
	Batch nr 403053 and up	225448
	Description	
	Sous-vide system	

Date	14-10-2015	Revision #	1.1
Revision	New model.		

